

# Campbell County Juvenile Probation

P:\CRYSTAL\CR 10 Reports\Juvenile Pr

## Active Caseload Summary

1/1/2009 to 12/31/2009

Court / Status Breakdown as of 12/31/2009	Male	Female
District Court Ordered Probation	38	22
District Court Awaiting Adjudication	7	6
District Court Bond Condition / Revocation Pending	0	1
District Court Awaiting Adjudication / In Placement	1	0
Referred for Intensive Supervision	2	5
Circuit Court Ordered Supervised Probation	18	1
Circuit Court Unsupervised Probation / Community Service Hours Only	2	4
Municipal Court Ordered Supervised Probation	29	10
Municipal Court Unsupervised Probation / Community Service Hours Only	118	51
D.F.S. Referred Community Service	1	0
School Referred Community Service	0	0
Other Agency Referred Community Service	2	0
Courtesy Supervised Probation	5	0
Placements in Institutions	91	37
Living Out of County / State	1	3
Cases Dismissed	0	0
<b>Total Cases</b>	<b>317</b>	<b>140</b>

### Age Breakdown

	8	9	10	11	12	13	14	15	16	17	18	19	20
<b>Male</b>	0	0	0	0	4	7	28	40	81	84	51	17	3
<b>Female</b>	0	0	0	0	3	8	6	20	42	28	20	9	3
<b>Total</b>	0	0	0	0	7	15	34	60	123	112	71	26	6

### New Cases in Period for 1/1/2009 to 12/31/2009

### Carryover Cases in Period of 1/1/2009 to 12/31/2009

Court	M	F	Total	Court	M	F	Total
District	47	27	74	District	82	36	118
Circuit	8	4	12	Circuit	13	2	15
Municipal	122	56	178	Municipal	25	6	31
Out of County	0	1	1	Out of County	1	2	3
Courtesy	7	0	7	Courtesy	1	0	1

Total

195

93

288

Total

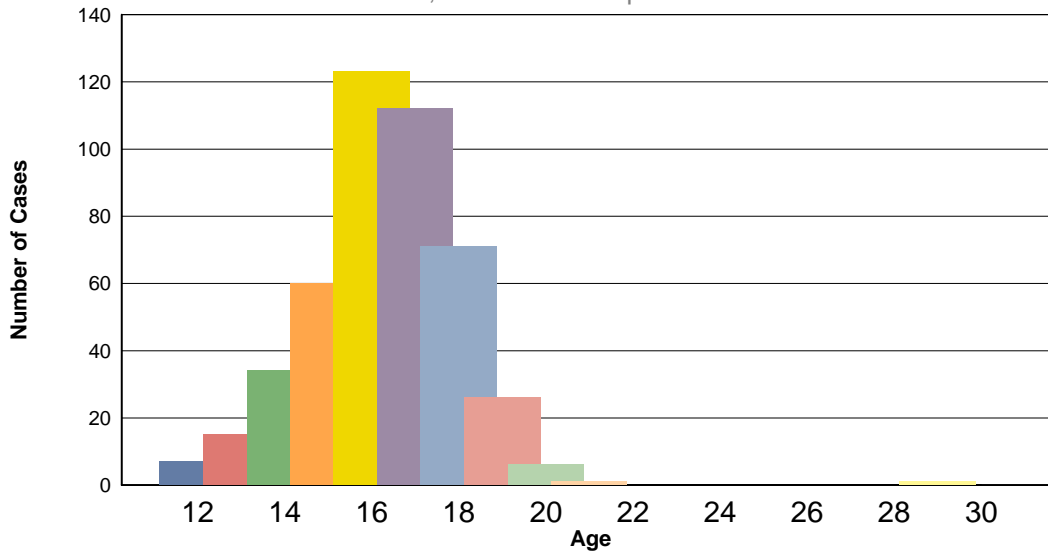
122

47

169

### Number of Cases by Age

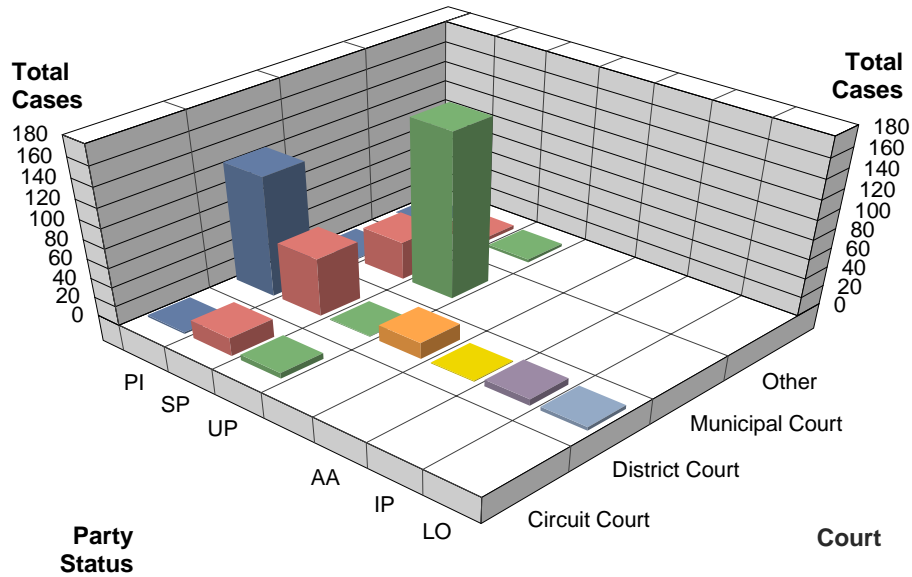
District, Circuit & Municipal Courts



1/1/2009 to 12/31/2009

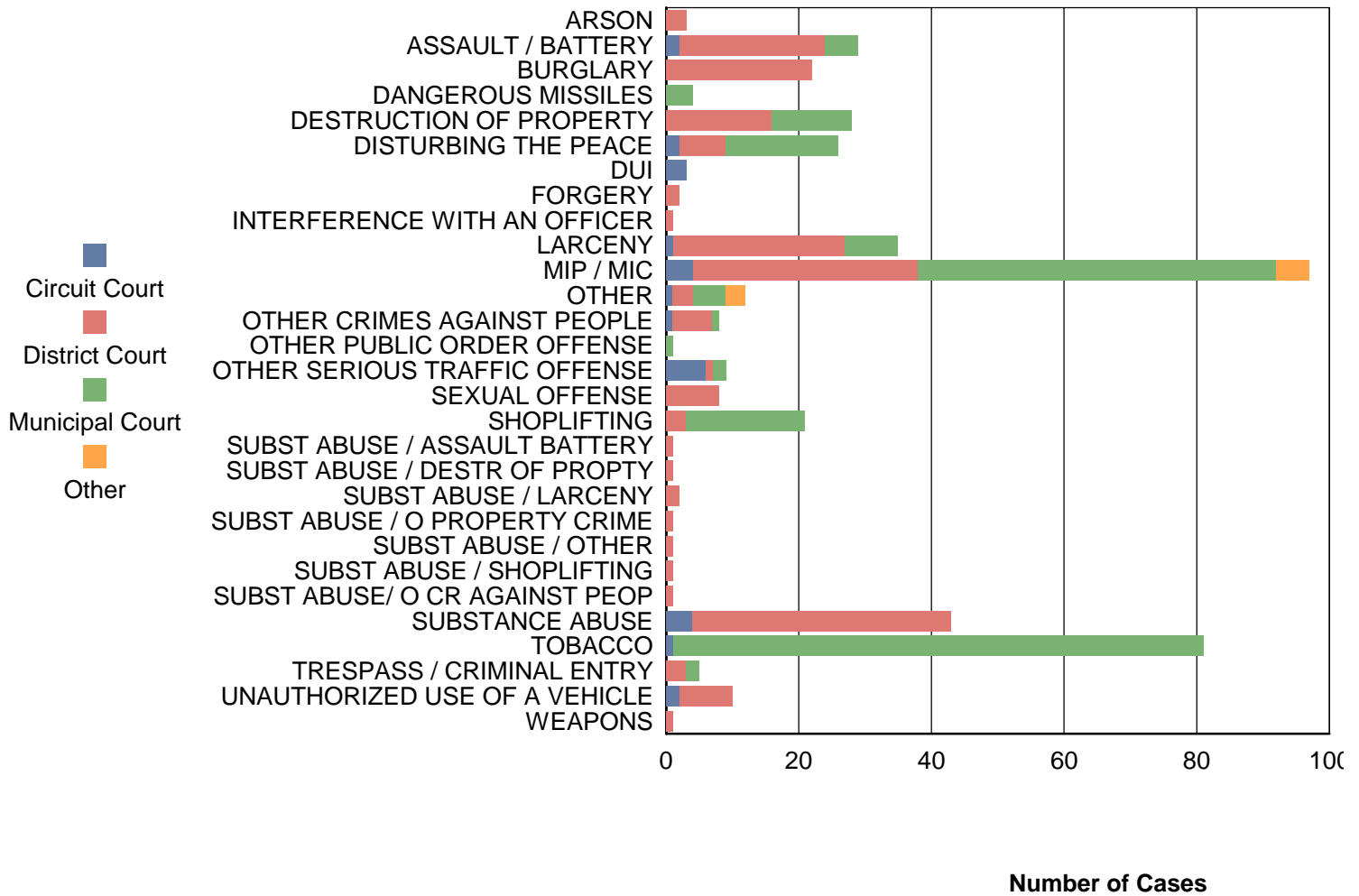
### Courts by Juvenile Status

District, Circuit & Municipal Courts



### Cases by Offense

1/1/2009 to 12/31/2009



### Cases by Offense and Court Type

1/1/2009 to 12/31/2009

	Circuit Court			District Court			Municipal Cou			Other		Tot
	F	M	Tot	F	M	Tot	F	M	Tot	M	Tot	
ARSON	0	0	0	0	3	3	0	0	0	0	0	:

ASSAULT / BATTERY	0	2	<b>2</b>	7	15	<b>22</b>	3	2	<b>5</b>	0	<b>0</b>	<b>2</b>
BURGLARY	0	0	<b>0</b>	0	22	<b>22</b>	0	0	<b>0</b>	0	<b>0</b>	<b>2</b>
DANGEROUS MISSILES	0	0	<b>0</b>	0	0	<b>0</b>	0	4	<b>4</b>	0	<b>0</b>	<b>4</b>
DESTRUCTION OF PROPERTY	0	0	<b>0</b>	6	10	<b>16</b>	0	12	<b>12</b>	0	<b>0</b>	<b>2</b>
DISTURBING THE PEACE	0	2	<b>2</b>	1	6	<b>7</b>	7	10	<b>17</b>	0	<b>0</b>	<b>2</b>
DUI	0	3	<b>3</b>	0	0	<b>0</b>	0	0	<b>0</b>	0	<b>0</b>	<b>3</b>
FORGERY	0	0	<b>0</b>	2	0	<b>2</b>	0	0	<b>0</b>	0	<b>0</b>	<b>2</b>
INTERFERENCE WITH AN OFFICER	0	0	<b>0</b>	1	0	<b>1</b>	0	0	<b>0</b>	0	<b>0</b>	<b>1</b>
LARCENY	0	1	<b>1</b>	11	15	<b>26</b>	4	4	<b>8</b>	0	<b>0</b>	<b>3</b>
MIP / MIC	1	3	<b>4</b>	20	14	<b>34</b>	18	36	<b>54</b>	5	<b>5</b>	<b>9</b>
OTHER	1	0	<b>1</b>	2	1	<b>3</b>	3	2	<b>5</b>	3	<b>3</b>	<b>1</b>
OTHER CRIMES AGAINST PEOPLE	0	1	<b>1</b>	1	5	<b>6</b>	1	0	<b>1</b>	0	<b>0</b>	<b>1</b>
OTHER PUBLIC ORDER OFFENSE	0	0	<b>0</b>	0	0	<b>0</b>	0	1	<b>1</b>	0	<b>0</b>	<b>1</b>
OTHER SERIOUS TRAFFIC OFFENSE	2	4	<b>6</b>	0	1	<b>1</b>	0	2	<b>2</b>	0	<b>0</b>	<b>6</b>
SEXUAL OFFENSE	0	0	<b>0</b>	0	8	<b>8</b>	0	0	<b>0</b>	0	<b>0</b>	<b>8</b>
SHOPLIFTING	0	0	<b>0</b>	1	2	<b>3</b>	3	15	<b>18</b>	0	<b>0</b>	<b>2</b>
SUBST ABUSE / ASSAULT BATTERY	0	0	<b>0</b>	1	0	<b>1</b>	0	0	<b>0</b>	0	<b>0</b>	<b>1</b>
SUBST ABUSE / DESTR OF PROPTY	0	0	<b>0</b>	0	1	<b>1</b>	0	0	<b>0</b>	0	<b>0</b>	<b>1</b>
SUBST ABUSE / LARCENY	0	0	<b>0</b>	1	1	<b>2</b>	0	0	<b>0</b>	0	<b>0</b>	<b>2</b>
SUBST ABUSE / O PROPERTY CRIME	0	0	<b>0</b>	0	1	<b>1</b>	0	0	<b>0</b>	0	<b>0</b>	<b>1</b>
SUBST ABUSE / OTHER	0	0	<b>0</b>	0	1	<b>1</b>	0	0	<b>0</b>	0	<b>0</b>	<b>1</b>
SUBST ABUSE / SHOPLIFTING	0	0	<b>0</b>	0	1	<b>1</b>	0	0	<b>0</b>	0	<b>0</b>	<b>1</b>
SUBST ABUSE/ O CR AGAINST PEOP	0	0	<b>0</b>	0	1	<b>1</b>	0	0	<b>0</b>	0	<b>0</b>	<b>1</b>
SUBSTANCE ABUSE	1	3	<b>4</b>	13	26	<b>39</b>	0	0	<b>0</b>	0	<b>0</b>	<b>4</b>
TOBACCO	0	1	<b>1</b>	0	0	<b>0</b>	23	57	<b>80</b>	0	<b>0</b>	<b>8</b>
TRESPASS / CRIMINAL ENTRY	0	0	<b>0</b>	2	1	<b>3</b>	0	2	<b>2</b>	0	<b>0</b>	<b>3</b>

	Circuit Court			District Court			Municipal Cou			Other		To
	F	M	Tot	F	M	Tot	F	M	Tot	M	Tot	
UNAUTHORIZED USE OF A VEHICLE	1	1	<b>2</b>	3	5	<b>8</b>	0	0	<b>0</b>	0	<b>0</b>	<b>1</b>
WEAPONS	0	0	<b>0</b>	0	1	<b>1</b>	0	0	<b>0</b>	0	<b>0</b>	<b>1</b>

<b>Total</b>	<b>6</b>	<b>21</b>	<b>27</b>	<b>72</b>	<b>141</b>	<b>213</b>	<b>62</b>	<b>147</b>	<b>209</b>	<b>8</b>	<b>8</b>	<b>4!</b>
--------------	----------	-----------	-----------	-----------	------------	------------	-----------	------------	------------	----------	----------	-----------

**Total**

60

13

1

1

7

19

6

39

169

1

0

2

5

128

4

0

457

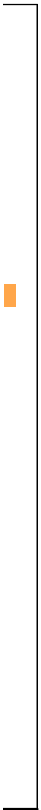
**Total**

317

140

457





100

ital

3

19

12

4

18

16

3

2

1

15

17

2

8

1

9

8

11

1

1

2

1

1

1

1

13

11

5

total

0

1

